



Open Time Observation & Proposal Submission Plan

Woong-Seob Jeong
for
MIRIS Team



Open Time Observation

- **5th Phase: 2015/04 ~ 2015/11**

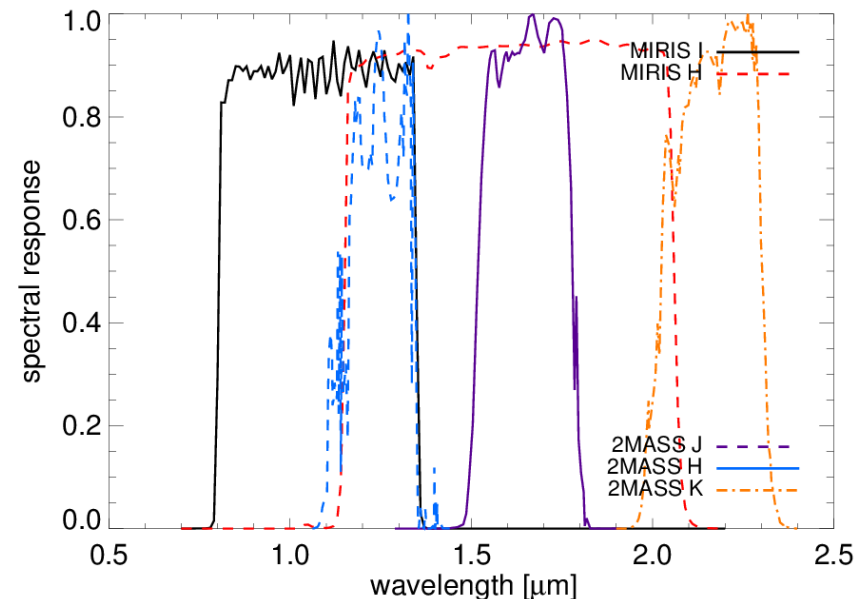
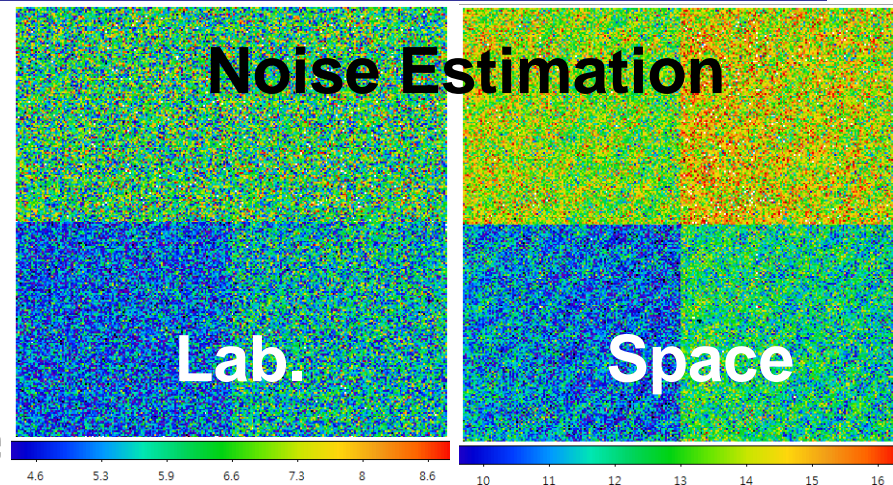
Mode	PV Phase (3 months)	1 st Phase (1 month)	2 nd Phase (5 months)	3 rd phase (2 month)	4 th phase (5 months)	5 th Phase (8 months)
Test	10 (1 month)		(if needed)			(if needed)
Space Obs.	(1 month)					OT Obs. Earth Obs.
-GP (Pa α)	4		4		4	
-CIB	4	8		4		
-Calibration	2	2	2	2	2	
Earth Obs.	(1 month) 2 orbits/day		Test Obs. (1 / 4 months) For emergency		Test Obs. For emergency	

Unit: orbits/day



Expected Sensitivity (3σ)

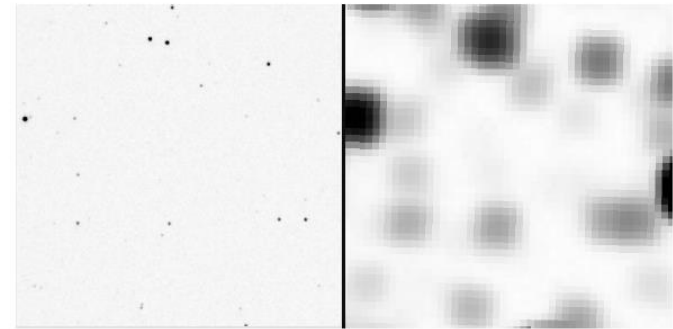
- Noise affected by stripe pattern:
2~3 times noise \uparrow
- Nominal observation mode
- Paschen- α line sensitivity
 $\sim 1.1 \times 10^{-19} \text{ W/m}^2/\text{arcsec}^2$
 $= \sim 150 \text{ Ry @ H}\alpha$
- I & H band sensitivity
 $\sim 16.8, 17 \text{ AB mag.}$



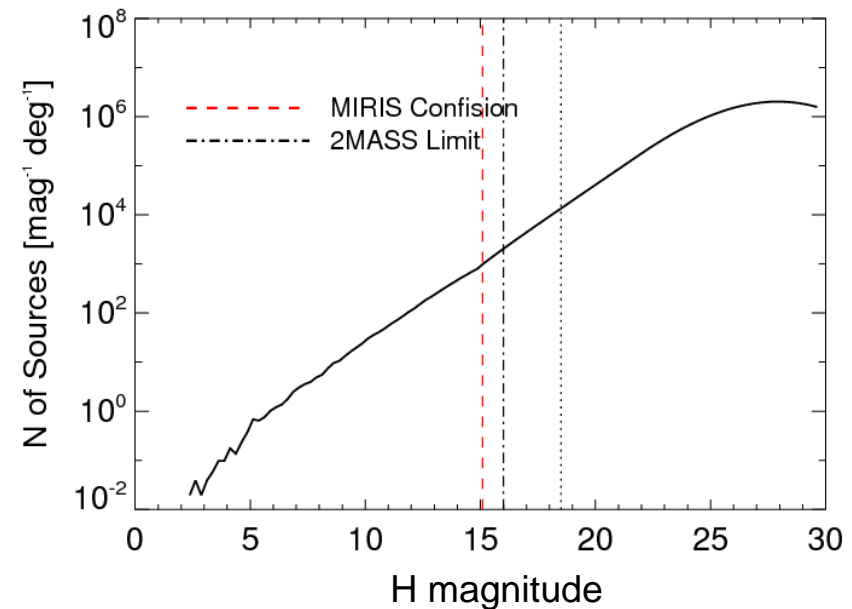
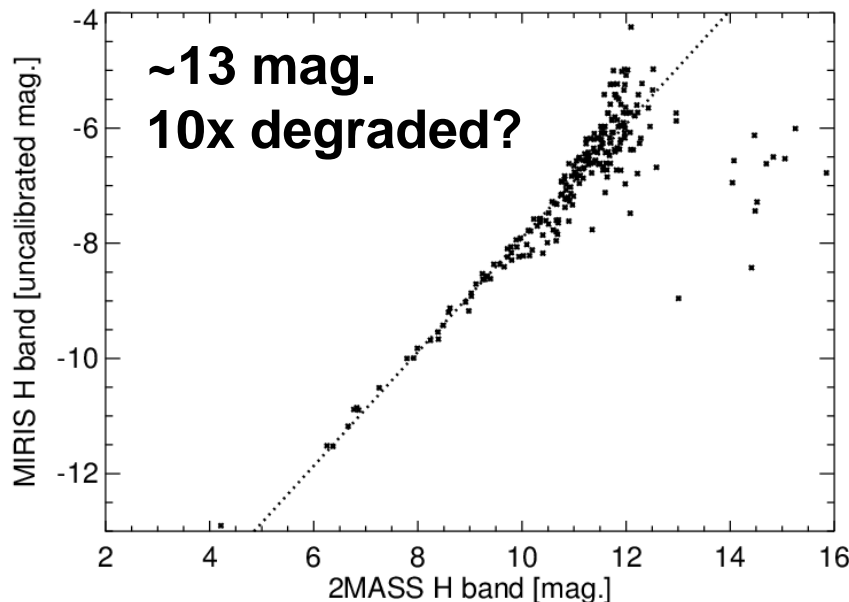


Confusion Limit (3σ)

- Large beam size $\sim 1'$
- Confusion limit @ high galactic lat. ~ 15 mag. @ H band
- Source detection @ H band



2MASS vs MIRIS





Total Observational Time

- 7 orbits / day \rightarrow \sim 1,200 orbits (\sim 30%)
 - Supplementary observation for GP + Calibration
- Total orbits for OT: \sim 800 orbits (\sim 20%)
 - Pa- α survey: \sim 1,700 sq. deg. (\sim 130 targets)
 - I & H imaging Survey: \sim 5,000 sq. deg. (\sim 400 targets)
- Avoid the regions surveyed



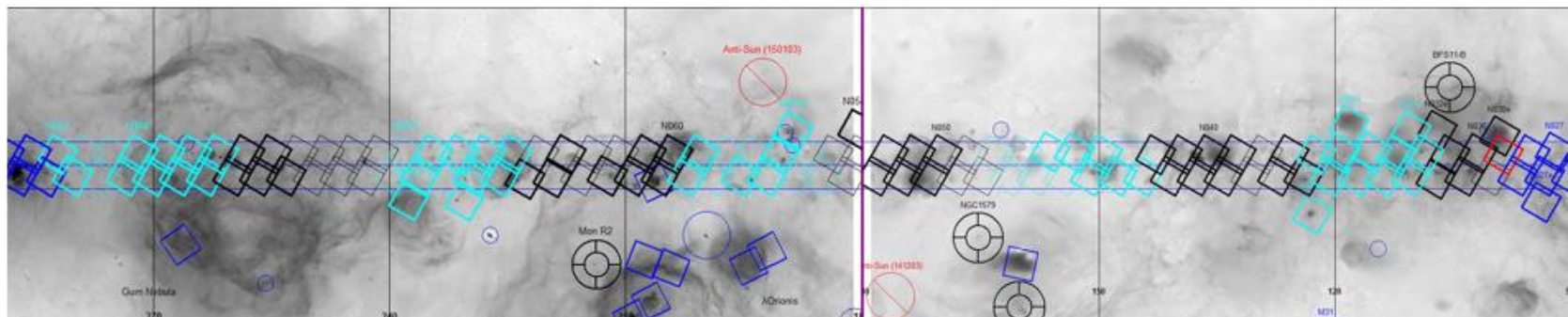
Open Time Proposal (1/2)

- **Only Pointed Observations**
- **Possible Users**
 - Universities & Institute, Korea
 - ISAS/JAXA, Japan
- **Required information**
 - Title
 - Purpose
 - Required depth & coverage
 - Target list



Open Time Proposal (2/2)

- We will provide additional information @ MIRIS HP
 - Observed targets for duplication check
 - Visibility map: avoidance of Sun, Earth & Moon
 - Data reduction tools





Expected Schedule

- **2015. 02 : Call for proposal**
- **2015. 03. 15 : Deadline for proposal**
- **~ 2015. 03 : Selection process (if necessary)
[Set priority for OT proposals]**
- **~ 2015. 04. 15 : Observational Plan for
OT proposals (according to priority)**
- **2015. 04. 15 ~ : Start OT Observations**